

# ÇUKURDERE

## SONDAJ



## **ÇUKURDERE DRILL**

It was established in 2015 to provide professional service to the mining sector with its knowledge, experience and expertise. Its aim is to use machinery and equipment suitable for today's technology to maximize efficiency with more economical projects and its high-quality and professional staff. It carries out its projects by adopting principles on health, work safety and environment.

**ÇUKURDERE DRILL** operates to achieve its goals

Responsible for successfully completing the project to high standards. It attaches great importance to the development of society and lifestyle in the region where it operates and to maintaining respectful relations with local employees.

### **Our main goals are;**

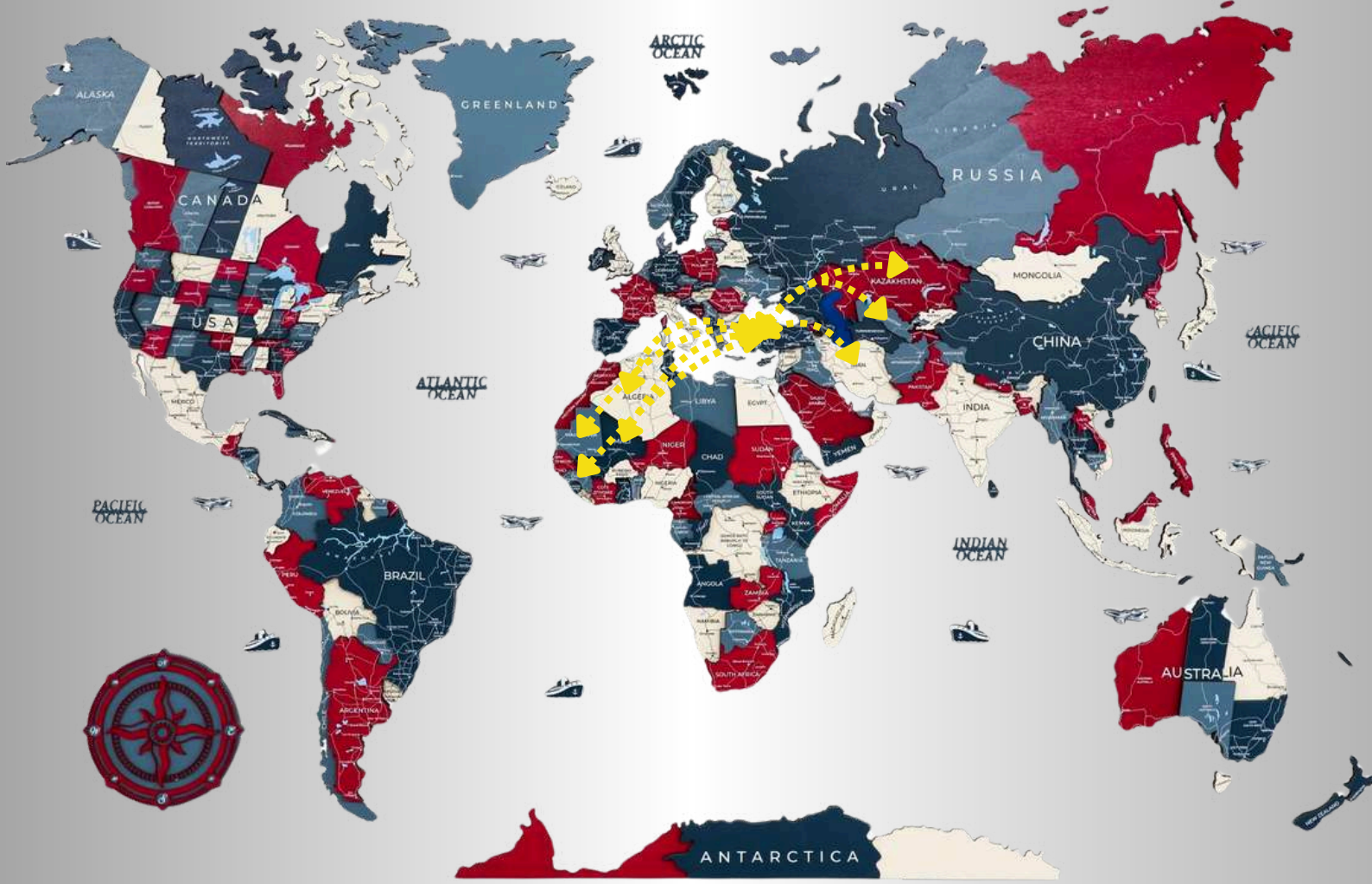
- >Customer-oriented and trust-based quality service,
- >Continuous increase in efficiency in technical and management services provided,
- >Increasing work safety and zero accidents,
- >Environmentally sensitive work and planning,
- >Development and establishment of cooperation and teamwork,
- >Establishment of high efficiency and quality awareness,
- >The goal of reaching more beautiful and perfect.



YEAR 1991



From Generation  
to Generation



**WHERE ARE WE IN THE  
WORLD?**



## Core

Core drilling provides critical information in many areas such as geology, mining, engineering and ground surveys. Core samples enable detailed analysis of geological structures in the field.

**ÇUKURDERE DRILL** is committed to keeping core drilling efficiency at the highest level in national and international standards.





# Our Commitment to Quality

>As **ÇUKURDERE DRILL**, we prioritize employer satisfaction and strive to fulfill our customers' diverse demands promptly and impeccably with our advanced, modern, and state-of-the-art machinery. Our objective is to deliver essential services through our experienced team within the evolving and expanding business landscape, positioning ourselves among the industry's leaders. **ÇUKURDERE DRILL**'s policy is to structure and execute our operations with a focus on customer satisfaction. We are confident that this commitment will foster quality and trust.

## Vision

>We are an innovative and continually evolving organization that leverages all technological advancements within our sector. We deliver reliable, employer-focused, and high-quality services, uphold the rights of both employers and employees, and cultivate a skilled workforce in the industry.

## Mission

>Our objective is to establish ourselves as a recognized organization capable of delivering reliable and high-quality services across all sectors in which we operate, leveraging our professionalism and collaborative efforts.

## Our tenets

- > Diversity,
- > Open-mindedness,
- > Mutual respect,
- > Clear goals,
- > Determination,
- > Leadership; are our corporate principles.

## Client Contentment

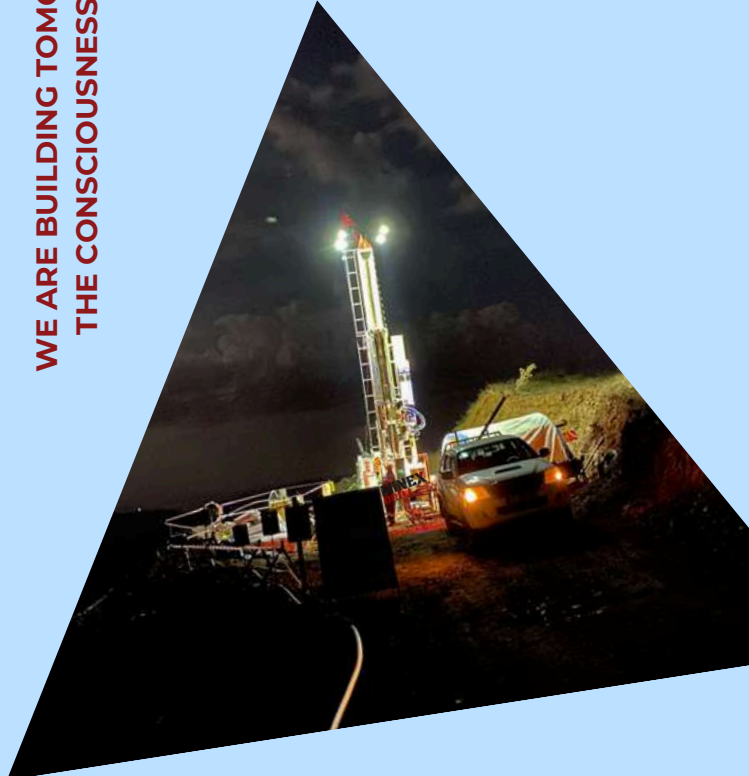
>Customer satisfaction regarding the services we offer reflects our level of professionalism. We deliver quality, reliable, healthy, and timely services to ensure customer satisfaction.

## Employee Engagement

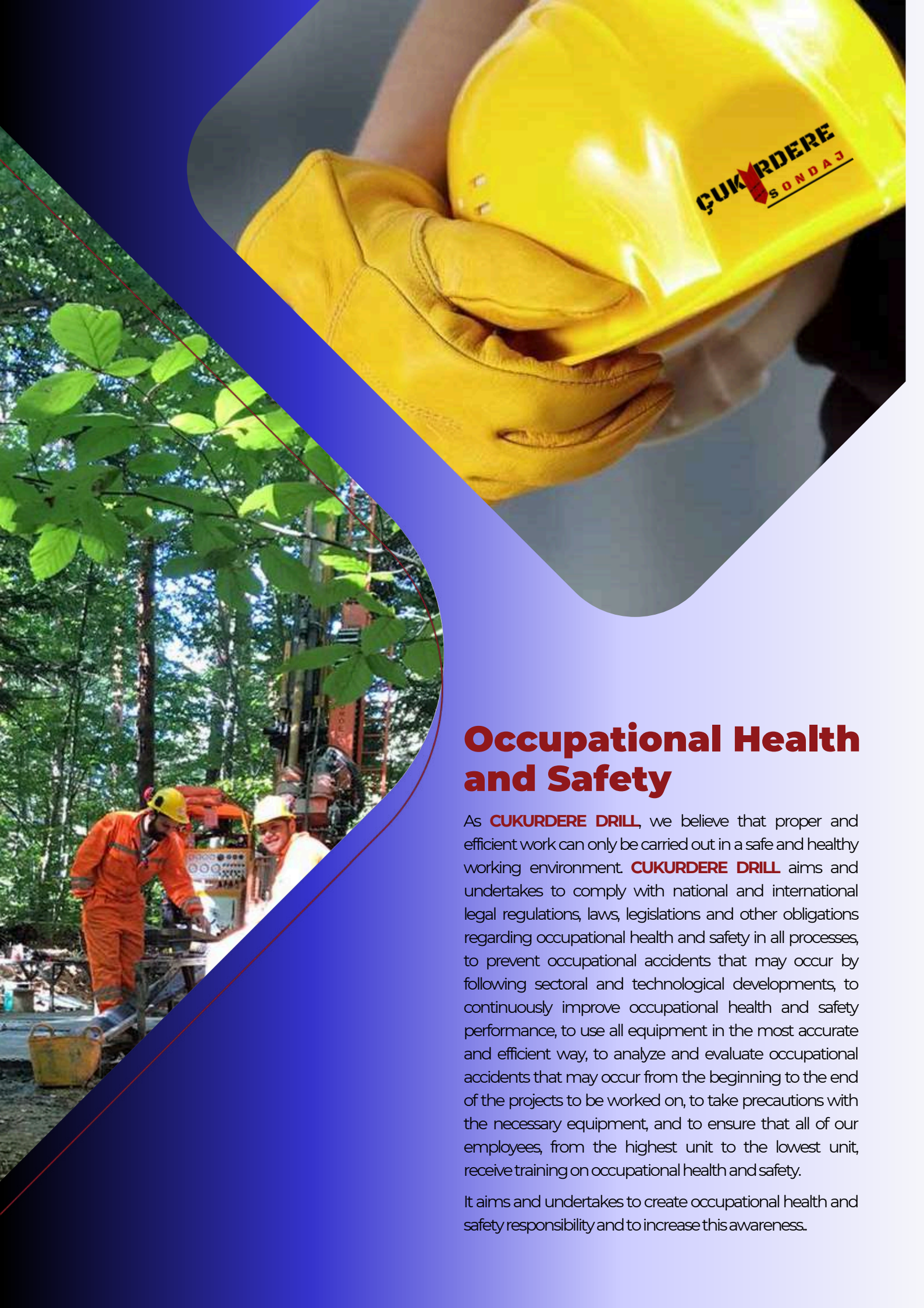
>We emphasize to our employees that the primary contributor to success is teamwork and remind them that they are integral members of this team.



WE ARE BUILDING TOMORROW FROM TODAY WITH  
THE CONSCIOUSNESS OF OUR RESPONSIBILITY







## Occupational Health and Safety

As **ÇUKURDERE DRILL**, we believe that proper and efficient work can only be carried out in a safe and healthy working environment. **ÇUKURDERE DRILL** aims and undertakes to comply with national and international legal regulations, laws, legislations and other obligations regarding occupational health and safety in all processes, to prevent occupational accidents that may occur by following sectoral and technological developments, to continuously improve occupational health and safety performance, to use all equipment in the most accurate and efficient way, to analyze and evaluate occupational accidents that may occur from the beginning to the end of the projects to be worked on, to take precautions with the necessary equipment, and to ensure that all of our employees, from the highest unit to the lowest unit, receive training on occupational health and safety.

It aims and undertakes to create occupational health and safety responsibility and to increase this awareness.

We are at your service with our machines equipped with the latest technology.

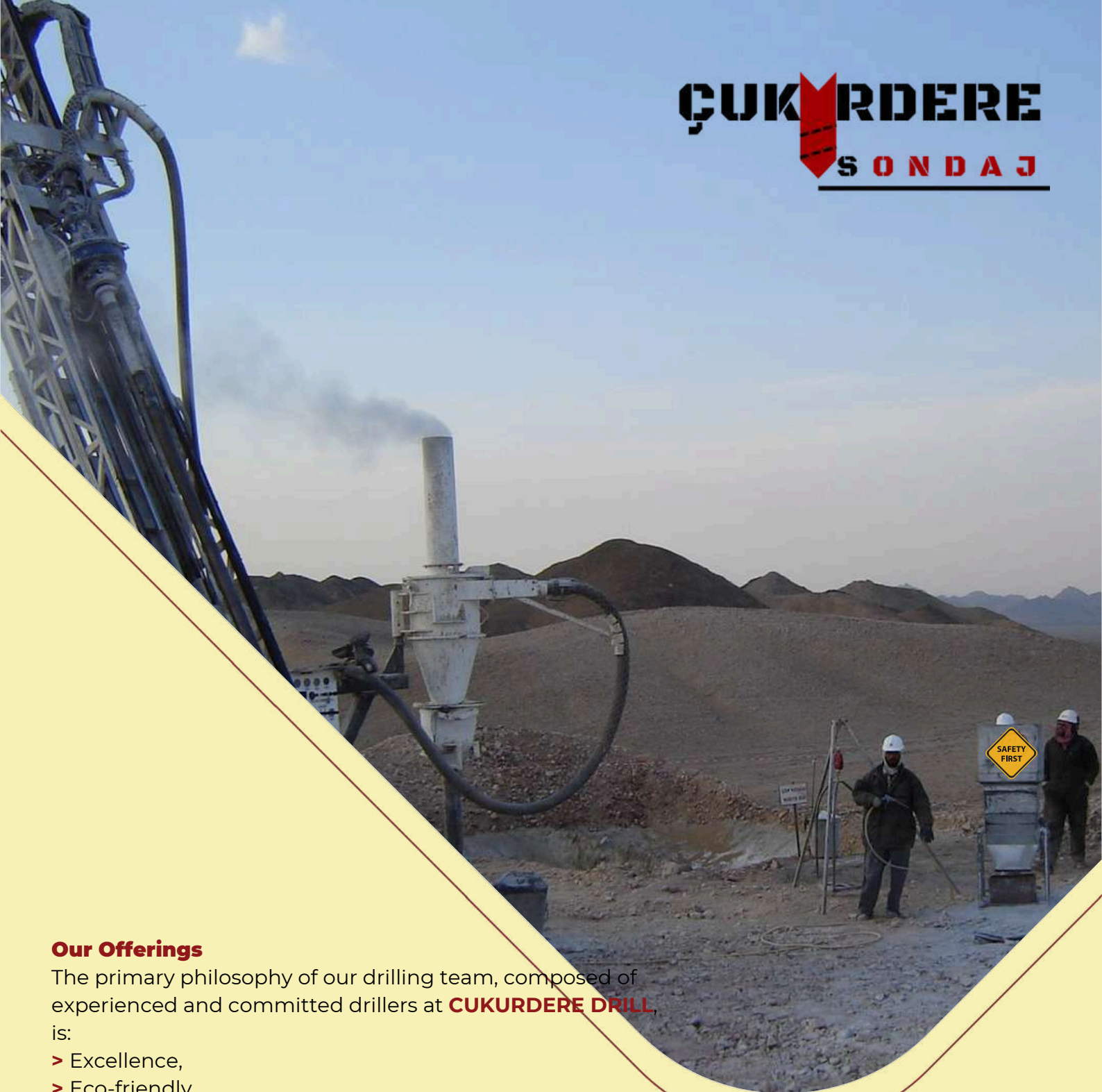




## Environment

As **ÇUKURDERE DRILL**, based on sustainable development and environmental protection concepts, in all processes, we aim and undertake to:

- > with national and international legal regulations, environmental laws, legislation and other obligations,
- > Follow sectoral, scientific research and technological developments on the environment, prevent environmental pollution and continuously improve environmental performance,
- > Protect natural resources and use them in the most efficient way,
- > Keep under control and reduce environmental impacts that occur and may occur in projects from the beginning to the end,
- > Reduce or recycle wastes that will occur during the works as much as possible,
- > Increase the environmental responsibility awareness of all our employees from the highest to the lowest units by providing environmental training to all our employees.



### Our Offerings

The primary philosophy of our drilling team, composed of experienced and committed drillers at **ÇUKURDERE DRILL**, is:

- > Excellence,
- > Eco-friendly,
- > In a manner that facilitates the employer in attaining their objectives to deliver drilling services in collaboration with the employer.

**ÇUKURDERE DRILL** core; RC; reverse circulation and multi-functional drilling machines is providing.

- > Wireline Surface Core Drilling
- > Wireline Underground Core Drilling
- > Air and Mud Rotary Drilling
- > Conventional Core Drilling
- > Reverse Circulation (RC) Drilling
- > RAB Drilling
- > Rapid Drilling for Grade Control

**SQR CERTIFICATION**

**Sertifika**  
CERTIFICATE

**ÇUKURDERE SONDAJ SAN. VE TİC. LTD. ŞTİ.**

OSTİM OSB MAH. 11252 SK. NO: 10 YENİMAHALLE/ANKARA/TÜRKİYE

**ISO 9001:2015**

Kapsam/Scope  
SONDAJ EKİPMANLARI VE YEDEK PARÇALARININ SATIŞI , SONDAJ VE MÜHENDİSLİK HİZMETLERİ  
SALES OF DRILLING EQUIPMENT AND SPARE PARTS, DRILLING AND ENGINEERING SERVICES

EA : 1-28-29-34

Bu sertifika ile yukarıda adı geçen kuruluşun Kalite Yönetim Sistemi gerekliliklerini karşıladığı tasdik olunur.  
This is to certify that the above mentioned company meets the requirement of Quality Management System.

Sertifika No / Certification Number	: MTS-41 059
Bk. Kayıt Tarihi / Date of Initial Reg.	: 11.11.2024
Bilinen Tarihi / Date of Certificate	: 11.11.2024
Geçerlilik Tarihi / Date of Expiry	: 10.11.2025
Revizyon / Revision	: 000

Bu sertifika herhangi bir değerlendirme şartlarına tabii ve yıla en az 1 kez yapılacak olan güncelleme dönemleri için geçerlidir. Bu yıla sertifikasyon periyodu için yapılan kriterler geçerlidir.  
This certificate is valid for the rest of the three-year certification period if the organization complies with the certification requirements and the surveillance audits to be carried out at least once a year as stipulated accordingly.

**IAF** **IAS**

**SİGMACERT ULUSLARARABİ BELGELENDİRME EĞİTİM VE TEST HİZMETLERİ LTD. ŞTİ.**  
Büyükdere Mahallesi Saray Bulvarı İşmerkezi Business Plaza No: 18/75 Etiler/Beşiktaş  
www.sigmacert.com.tr | info@sigmacert.com.tr | 0212 310 380 00  
YS.FR.129 Rev.01 18.09.2024

**SQR CERTIFICATION**

**Sertifika**  
CERTIFICATE

**ÇUKURDERE SONDAJ SAN. VE TİC. LTD. ŞTİ.**

OSTİM OSB MAH. 11252 SK. NO: 10 YENİMAHALLE/ANKARA/TÜRKİYE

**ISO 14001:2015**

Kapsam/Scope  
SONDAJ EKİPMANLARI VE YEDEK PARÇALARININ SATIŞI , SONDAJ VE MÜHENDİSLİK HİZMETLERİ  
SALES OF DRILLING EQUIPMENT AND SPARE PARTS, DRILLING AND ENGINEERING SERVICES

EA : 1-28-29-34

Bu sertifika ile yukarıda adı geçen kuruluşun Çevre Yönetim Sistemi gerekliliklerini karşıladığı tasdik olunur.  
This is to certify that the above mentioned company meets the requirement of Environmental Management System.

Sertifika No / Certification Number	: MTS-41 060
Bk. Kayıt Tarihi / Date of Initial Reg.	: 11.11.2024
Bilinen Tarihi / Date of Certificate	: 11.11.2024
Geçerlilik Tarihi / Date of Expiry	: 10.11.2025
Revizyon / Revision	: 000

Bu sertifika herhangi bir değerlendirme şartlarına tabii ve yıla en az 1 kez yapılacak olan güncelleme dönemleri için geçerlidir. Bu yıla sertifikasyon periyodu için yapılan kriterler geçerlidir.  
This certificate is valid for the rest of the three-year certification period if the organization complies with the certification requirements and the surveillance audits to be carried out at least once a year as stipulated accordingly.

**IAF** **IAS**

**SİGMACERT ULUSLARARABİ BELGELENDİRME EĞİTİM VE TEST HİZMETLERİ LTD. ŞTİ.**  
Büyükdere Mahallesi Saray Bulvarı İşmerkezi Business Plaza No: 18/75 Etiler/Beşiktaş  
www.sigmacert.com.tr | info@sigmacert.com.tr | 0212 310 380 00  
YS.FR.129 Rev.01 18.09.2024



**SQR CERTIFICATION**

**Sertifika**  
CERTIFICATE

**ÇUKURDERE SONDAJ SAN. VE TİC. LTD. ŞTİ.**

OSTİM OSB MAH. 11252 SK. NO: 10 YENİMAHALLE/ANKARA/TÜRKİYE

**ISO 45001:2018**

Kapsam/Scope  
SONDAJ EKİPMANLARI VE YEDEK PARÇALARININ SATIŞI , SONDAJ VE MÜHENDİSLİK HİZMETLERİ  
SALES OF DRILLING EQUIPMENT AND SPARE PARTS, DRILLING AND ENGINEERING SERVICES

EA : 1-28-29-34

Bu sertifika ile yukarıda adı geçen kuruluşun Sağlık ve Güvenlik Yönetim Sistemi gerekliliklerini karşıladığı tasdik olunur.  
This is to certify that the above mentioned company meets the requirement of Occupational Health & Safety Management System.

Sertifika No / Certification Number	: MTS-41061
Bk. Kayıt Tarihi / Date of Initial Reg.	: 11.11.2024
Bilinen Tarihi / Date of Certificate	: 11.11.2024
Geçerlilik Tarihi / Date of Expiry	: 10.11.2025
Revizyon / Revision	: 000

Bu sertifika herhangi bir değerlendirme şartlarına tabii ve yıla en az 1 kez yapılacak olan güncelleme dönemleri için geçerlidir. Bu yıla sertifikasyon periyodu için yapılan kriterler geçerlidir.  
This certificate is valid for the rest of the three-year certification period if the organization complies with the certification requirements and the surveillance audits to be carried out at least once a year as stipulated accordingly.

**IAF** **IAS**

**SİGMACERT ULUSLARARABİ BELGELENDİRME EĞİTİM VE TEST HİZMETLERİ LTD. ŞTİ.**  
Büyükdere Mahallesi Saray Bulvarı İşmerkezi Business Plaza No: 18/75 Etiler/Beşiktaş  
www.sigmacert.com.tr | info@sigmacert.com.tr | 0212 310 380 00  
YS.FR.129 Rev.01 18.09.2024



## MRC 1200 M

### TECHNICAL SPECIFICATIONS

Drill Angle	45°-90°				RC-M
Rod Diameter	PWL	HWL	NWL	BWL	5"
Depth (m)	650	1000	1550	2050	400
Depth (ft)	2132	3280	5084	6724	1312



## MDC 500

Due to its compact design and telescopic tower, it is capable of delivering enhanced capacity core drilling services in forested and confined environments. It is mounted on a pallet for transportation across challenging terrain.

### TECHNICAL SPECIFICATIONS

Drill Angle	45°-90°			
Rod Diameter	PWL	HWL	NWL	BWL
Depth(m)	650	1000	1550	2050
Depth(ft)	2132	3280	5084	6724



## MDC 2500

### TECHNICAL SPECIFICATIONS

Drill Angle	45°-90			
Rod Diameter	BWL	NWL	HWL	PWL
Depth(m)	3000	2500	1900	1000
Depth(ft)	9842	8202	6233	3280





## MDC 1000

### TECHNICAL SPECIFICATIONS

Drill Angle	45°-90			
Rod Diameter	BWL	NWL	HWL	PWL
Depth(m)	3000	2500	1900	1000
Depth(ft)	9842	8202	6233	3280

ÇUKURDERE  
2025  
S O N D A J

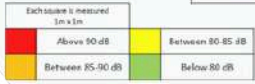
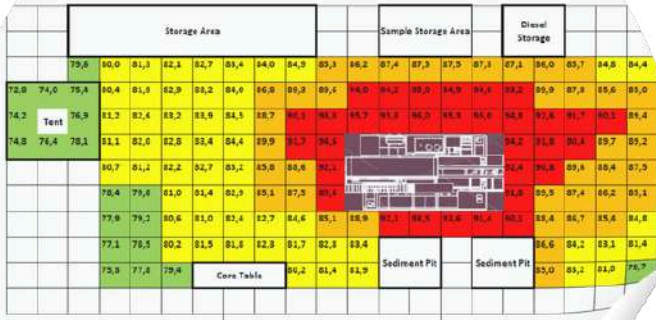




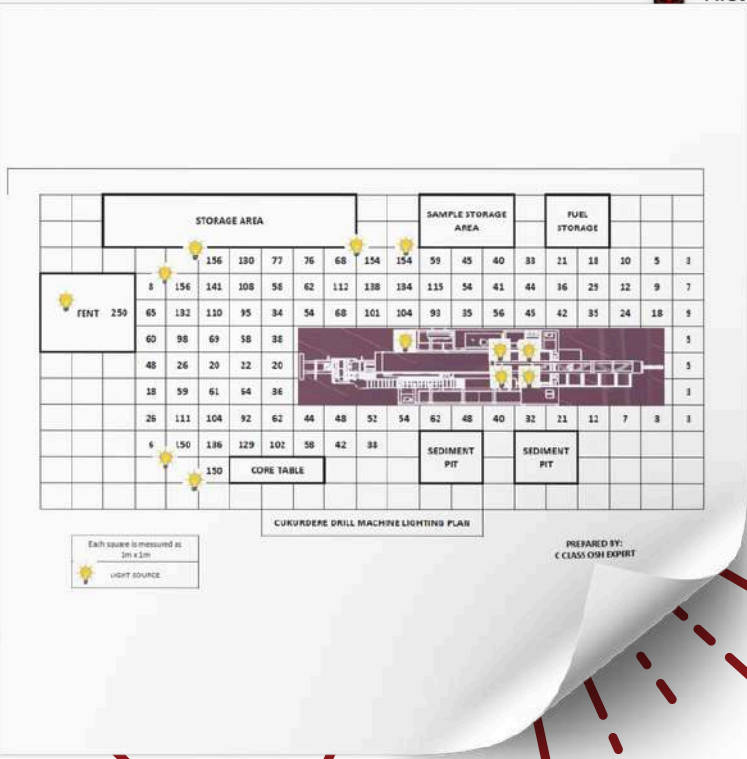
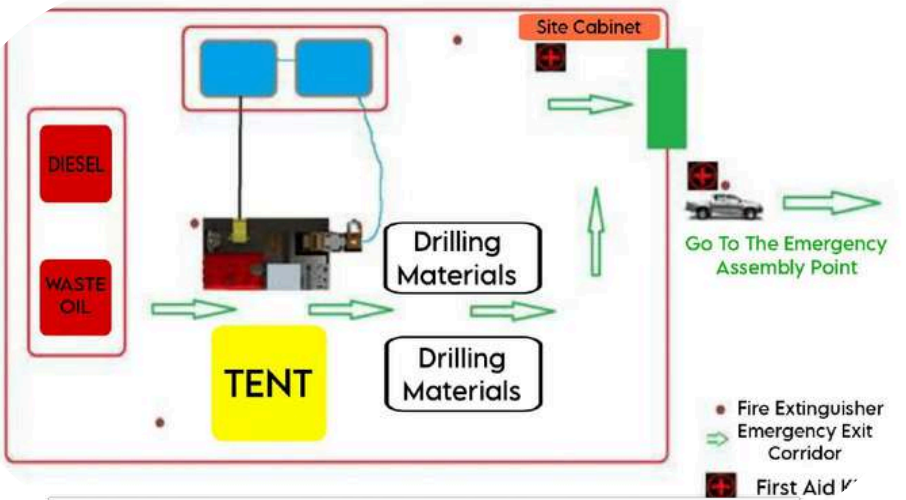
From our 1104 m deep well



We explore the potential...



PREPARED BY: HSE SPECIALIST



PREPARED BY: C CLASS OSH EXPERT

**safety first**



# RC & DIAMOND CORE DRILLING SERVICES

## THINGS TO CONSIDER IN DRILLING OPERATIONS

### HANDBOOK



**Handbook Table:**

Handbook Title	
Handbook Code	
Handbook Version	
Handbook Date	
Handbook Author	
Handbook Reviewer	
Handbook Approver	
Handbook Status	

**Equipment and materials belonging to the drilling machine should be checked at a safe distance and in an orderly, appropriate manner.**

**The clearest materials and equipment should be easily accessible and have a comfortable working area.**

**If you need further assistance, feel free to ask!**

**Drilling Operations as of great importance in mining.** The most critical tool used in drilling is the drill bit. It is essential that the work you are doing is high quality and consistent. The drill bit is the most important part of the drill. Therefore, even though you work one machine at a time, you are always engaged in one of the most important tasks in mining. Remember the safety you also bring to the machine of your team, and work with your COLLEGE and SAFETY. Çukurdere DSK, which follows the principle of "ZERO ACCIDENTS", all those who are active for safety in the field should be prepared for their safety and safety. If you need further assistance, feel free to ask!

**Drilling Operations as of great importance in mining.** The most critical tool used in drilling is the drill bit. It is essential that the work you are doing is high quality and consistent. The drill bit is the most important part of the drill. Therefore, even though you work one machine at a time, you are always engaged in one of the most important tasks in mining. Remember the safety you also bring to the machine of your team, and work with your COLLEGE and SAFETY. Çukurdere DSK, which follows the principle of "ZERO ACCIDENTS", all those who are active for safety in the field should be prepared for their safety and safety. If you need further assistance, feel free to ask!

**Do not wear any jewelry during work.**

**Ensure that there are no open areas in your clothing such as sleeves, pants, etc.**

**If you have any hair, keep it completely tucked away!**

**Close and lock the machine and its controls and ensure that the machine is not started until you are ready to start working.**

**Before performing maintenance or repairs on the drilling machine, ensure that the machine and its components are in the off position. Turn all its components one by one off the machine. Turn all its components one by one off the machine. Turn all its components one by one off the machine. Turn all its components one by one off the machine.**

**During the installation and removal of equipment, always use the machine in a safe manner. Do not use the machine in a way that is not intended. Do not use the machine in a way that is not intended. Do not use the machine in a way that is not intended.**

**When starting the motor, the tool or the toolhead of a 30-degree angle. Do not use the corners of the tool head for the tool or toolhead, causing damage and preventing the tool from rotating off.**

**If the key stick of the remote, it can cause any serious issues. Therefore, be cautious about the force you apply while holding the tool.**

**During the removal and installation of the tool, be careful of moving personnel, pipes, ropes, connections, water head hoses, falling objects, slippery surfaces, and heavy lifting.**

**If you need more help, feel free to ask!**

**The drilling location's access routes should be planned to ensure the safe transportation of personnel and materials, with necessary safety precautions in place.**

**The work platforms should be prepared according to valid safety standards.**

**If you need more help, feel free to ask!**

**Equipment and materials belonging to the drilling machine should be checked at a safe distance and in an orderly, appropriate manner.**

**The clearest materials and equipment should be easily accessible and have a comfortable working area.**

**If you need further assistance, feel free to ask!**

**Batteries and liquid chemicals used in drilling operations should be stored in an orderly manner without blocking the work area.**

**To minimize contact with materials during use, appropriate personal protective equipment should be worn.**

**Chemical and flammable liquids should be stored separately and in suitable containers.**

**Spilled liquids should be cleaned up immediately to avoid slipping.**

**During the drilling, the operator should wear safety glasses, earplugs, and gloves to prevent further harm and treatment of harmful chemicals.**

**Additionally, when the tool is present, it should be used carefully and cautiously to avoid any negative impact on the environment, and to prevent an industrial boom.**

**The tool should be removed from the control by the operator.**

**The tool should be removed from the control by the operator.**

**To safely transport your tools, wear work gloves and fill the box with two people, each holding one end while loading at the boxes and keeping the back straight. The technique helps prevent lower back and back pain.**

**Use your arms to hold the boxes instead of resting on your lower back and back muscles!**

**Before the machine is placed at the drilling location, the drilling area and the spot where the machine will be installed should be made safe and orderly.**

**The machine is then placed at the location in a controlled and safe manner, and is assembly is completed.**

**Please avoid contact with the machine or drill while the drilling machine is in operation, as this is a high rotation speed. It can work with a safe and safe distance.**

**Ensure that the area during operation is clear of the machine. Do not touch the machine or drill while it is in operation. Do not touch the machine or drill while it is in operation.**

**During the removal of the rails, do not hold them by the middle section. Put yourself to the side to release the tension at the rail, transferring the force to your arms. This will help prevent injury. Carefully and slowly place the rail back into the supports.**

**If guidance is necessary, both the person assisting and the one pulling should wear proportional force.**

**Clearing hard tools and tools in a safe and secure manner, ensuring they are easily accessible in designated locations. Avoid overcrowding them in a way that creates hazards. Place the obstructions in accessible locations. Use your obstacles, to ensure they can be easily handled.**

**Keep your workplace clean and organized. Never use space for storage for personal belongings.**

**Use a clear, unobstructed path for emergency equipment.**

**Display all safety signs and messages. Determine your safety levels protecting the environment.**

**Remove all tools to avoid clutter.**

**Use a clear, unobstructed path for emergency equipment.**

**Display all safety signs and messages. Determine your safety levels protecting the environment.**

**VEHICLE USAGE**

- Before work in a vehicle
- Use a clear, unobstructed path for emergency equipment.
- Display all safety signs and messages. Determine your safety levels protecting the environment.

**The job should be done in a safe and secure manner, ensuring they are easily accessible in designated locations. Avoid overcrowding them in a way that creates hazards. Place the obstructions in accessible locations. Use your obstacles, to ensure they can be easily handled.**

**Use your arms to hold the boxes instead of resting on your lower back and back muscles!**

**Use your arms to hold the boxes instead of resting on your lower back and back muscles!**

**YOUR HEALTH is your greatest asset.**

**Protect your health by preventing and avoiding stress!**

**Protect your health by preventing and avoiding stress!**

**YOUR HEALTH is your greatest asset.**

**Protect your health by preventing and avoiding stress!**

**Protect your health by preventing and avoiding stress!**

**YOUR HEALTH is your greatest asset.**

**Protect your health by preventing and avoiding stress!**

**Protect your health by preventing and avoiding stress!**

# THINGS TO CONSIDER IN DRILLING OPERATIONS HANDBOOK

Cukurdere Drill Company has adopted the principle of providing a safe working environment, identifying the risks that may endanger the project and employees in advance, and taking all measures and being prepared for the possibility of any emergency.

LOW COST HIGH EFFICIENCY



Two hundred and fifty thousand meters of core and RC drilling per year, both national and international



# ÇUKURDERE

## SONDAJ

📍 Ostim OSB Mah. 1125/2. Sokak No: 10 Yenimahalle, Ankara-TÜRKİYE

☎ +90 312 354 77 7 +90 312 354 77 71

✉ [cukurdere@cukurderesondaj.com.tr](mailto:cukurdere@cukurderesondaj.com.tr)

[www.cukurderesondaj.com.tr](http://www.cukurderesondaj.com.tr)